



| PHYSICAL PROPERTIES | RESULT OBTAINED | TEST METHOD |
|---|---|---|
| Operating temperature range* | - 200 °C + 110 °C | EN 14707 EN 14706 |
| Thermal conductivity λ At a mean temperature of 0 °C At a mean temperature of + 40 °C | Tubes THK 6-19 mm ≤ 0.034 W/m·K Tubes THK 25-32 mm ≤ 0.036 W/m·K Sheets and tapes ≤ 0.034 W/m·K Tubes THK 6-19 mm ≤ 0.038 W/m·K Tubi THK 25-32 mm ≤ 0.040 W/m·K Sheets and tapes ≤ 0.038 W/m·K | EN 12667/ EN ISO 8497 |
| Water vapour diffusion factor (μ) | ≥ 7000 | EN 13469/EN 12086 |
| Water vapour permeability | 0.07 $\mu\text{gm/Nh}$ | BS4370:Part 2 |
| Water absorption | < 0,1 kg/m ² | EN 1432/ EN 1609 |
| Fire performance European standard | Tubes B _L - s2 - d0 Tapes B - s2 - d0 Sheets B - s3 - d0 | EN 13501 -1 |
| UK: Fire propagation Surface spread of flame Building Regulations | $l \leq 12.0$ $i < 6.0$ Class 1 Class 0 | BS476: Part 6 BS476: Part 7 BS476 Parts 6 and 7 |
| USA, Canada | Flame Class V-0 5VA | UL 94 UL 746 A - UL 746 C |
| Switzerland | Flame Class V.2 | |
| Shipyards (MED) | Meets test requirements | IMO Resolution A.653 (16) |
| Ozone resistance | Excellent | ISO 7326 |
| UV resistance | Good | UNI ISO 4892-2 |
| Antimicrobial behaviour | Meets test requirements | AATCC test method 30-2004 |
| Corrosion risk | Meets test requirements | EN 13468 |

* NB: for applications at lower temperatures please contact our technical department.
 For information regarding the chemical resistance of the product please consult the specific technical documentation.

PIPE SECTIONS - LENGTH 2 m (6 mm-13mm)

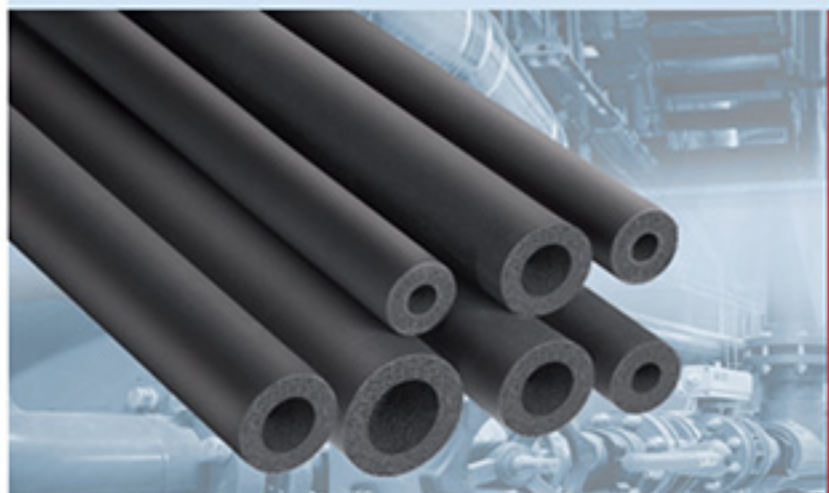
EUROBATEX®
يوروباتكس

| COPPER PIPE (Cu) | | STEEL PIPE (Fe) | | | PE/PP/PVC TUBES | Thickness 6 mm | Thickness 9 mm | Thickness 13 mm |
|------------------|-------------|-----------------|----------|-------------|-----------------|----------------|----------------|-----------------|
| ext. Ø mm | Ø nomin. DN | ext. Ø mm | Ø inches | Ø nomin. DN | Ø nomin. DN | m/ct | m/ct | m/ct |
| 6 | 4 | | | | | 496 | 352 | 220 |
| 8 | 6 | | | | | 432 | 300 | 210 |
| 10 | 8 | 10,20 | 1/8" | 6 | | 364 | 266 | 172 |
| 12 | 10 | | | | 12 | 316 | 234 | 136 |
| 14 | 10 | 13,60 | 1/4" | 8 | | 266 | 192 | 136 |
| 15/16 | | | | | 16 | 266 | 192 | 136 |
| 17/18 | 15 | 17,20 | 3/8" | 10 | | 220 | 166 | 118 |
| 19/20 | | | | | 20 | 180 | 135 | 98 |
| 22 | 20 | 21,30 | 1/2" | 15 | | 180 | 136 | 98 |
| 25 | 20 | 25,0 | | | 25 | 152 | 108 | 80 |
| 27/28 | 25 | 26,90 | 3/4" | 20 | | 130 | 98 | 78 |
| 34/35 | 32 | 33,7 | 1" | 25 | | 100 | 76 | 58 |
| 38 | | | | | | | 66 | 50 |
| 42 | 40 | 42,4 | 1,1/4" | 32 | | 90 | 60 | 48 |
| 48 | | | | 40 | | | 50 | 40 |
| 54 | 35 | 48,3 | 1,1/2" | 40 | | | 46 | 34 |
| 57 | | | | | | | 46 | 32 |
| 60 | | 60,3 | 2" | 50 | | | 46 | 32 |
| 64 | | | | | | | 46 | 30 |
| 70 | | 70,0 | | | | | 40 | 26 |
| 76 | 65 | 76,1 | 2,1/2" | 65 | | | 40 | 26 |
| 80 | | | | | | | 36 | 24 |
| 90 | 80 | 88,9 | 3 | 80 | | | 36 | 24 |
| 101 | | 101,6/104,3 | 3,1/2" | | | | 22 | 14 |
| 108 | | | | | | | 22 | 12 |
| 114 | 100 | 114,3 | 4" | 100 | | | 22 | 12 |
| 127 | | 127,0 | | | | | | 10 |
| 133 | | 133,0 | | | | | | 8 |
| 140 | | 139,7 | | | | | | 8 |
| 160 | | 160,0 | | | | | | 8 |

* Product not in stock, only produced on request. Packaging dimensions: 212 x 33 x 39 cm.

EUROBATEX®

PIPE SECTIONS



PIPE SECTIONS - LENGTH 2 m (6 mm-13mm)

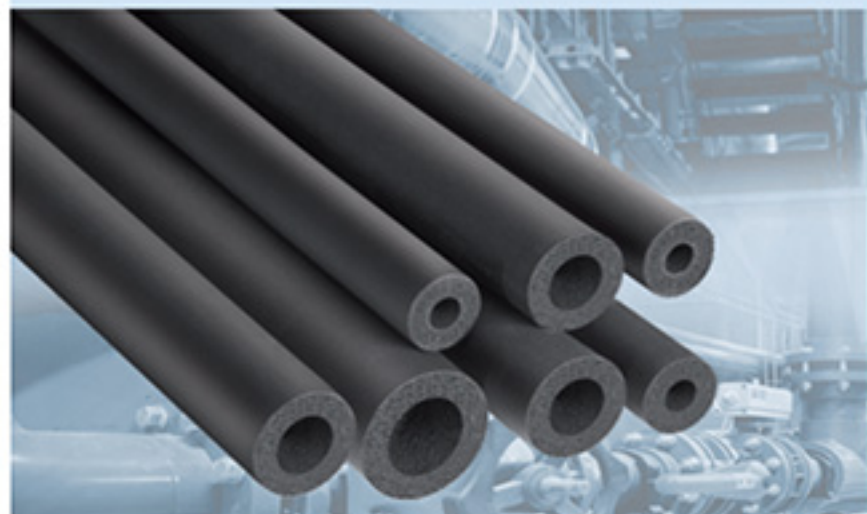
EUROBATEX®
یوروباتکس

| COPPER PIPE (Cu) | | STEEL PIPE (Fe) | | | PE/PP/PVC TUBES | Thickness 6 mm | Thickness 9 mm | Thickness 13 mm |
|------------------|-------------|-----------------|----------|-------------|-----------------|----------------|----------------|-----------------|
| ext. ø mm | ø nomin. DN | ext. ø mm | ø inches | ø nomin. DN | ø nomin. DN | m/ct | m/ct | m/ct |
| 6 | 4 | | | | | 496 | 352 | 220 |
| 8 | 6 | | | | | 432 | 300 | 210 |
| 10 | 8 | 10,20 | 1/8" | 6 | | 364 | 266 | 172 |
| 12 | 10 | | | | 12 | 316 | 234 | 136 |
| 14 | 10 | 13,60 | 1/4" | 8 | | 266 | 192 | 136 |
| 15/16 | | | | | 16 | 266 | 192 | 136 |
| 17/18 | 15 | 17,20 | 3/8" | 10 | | 220 | 166 | 118 |
| 19/20 | | | | | 20 | 180 | 135 | 98 |
| 22 | 20 | 21,30 | 1/2" | 15 | | 180 | 136 | 98 |
| 25 | 20 | 25,0 | | | 25 | 152 | 108 | 80 |
| 27/28 | 25 | 26,90 | 3/4" | 20 | | 130 | 98 | 78 |
| 34/35 | 32 | 33,7 | 1" | 25 | | 100 | 76 | 58 |
| 38 | | | | | | | 66 | 50 |
| 42 | 40 | 42,4 | 1,1/4" | 32 | | 90 | 60 | 48 |
| 48 | | | | 40 | | | 50 | 40 |
| 54 | 35 | 48,3 | 1,1/2" | 40 | | | 46 | 34 |
| 57 | | | | | | | 46 | 32 |
| 60 | | 60,3 | 2" | 50 | | | 46 | 32 |
| 64 | | | | | | | 46 | 30 |
| 70 | | 70,0 | | | | | 40 | 26 |
| 76 | 65 | 76,1 | 2,1/2" | 65 | | | 40 | 26 |
| 80 | | | | | | | 36 | 24 |
| 90 | 80 | 88,9 | 3 | 80 | | | 36 | 24 |
| 101 | | 101,6/104,3 | 3,1/2" | | | | 22 | 14 |
| 108 | | | | | | | 22 | 12 |
| 114 | 100 | 114,3 | 4" | 100 | | | 22 | 12 |
| 127 | | 127,0 | | | | | | 10 |
| 133 | | 133,0 | | | | | | 8 |
| 140 | | 139,7 | | | | | | 8 |
| 160 | | 160,0 | | | | | | 8 |

* Product not in stock, only produced on request. Packaging dimensions: 212 x 33 x 39 cm.

EUROBATEX®

PIPE SECTIONS



SELF-ADHESIVE PIPE SECTIONS - LENGTH 2 m

EUROBATEX®
تیوروباتیکس

| COPPER PIPE (Cu) | | STEEL PIPE (Fe) | | | PE/PP/PVC TUBES | Thickness 9 mm | Thickness 13 mm | Thickness 19 mm |
|------------------|-------------|-----------------|----------|-------------|-----------------|----------------|-----------------|-----------------|
| ext. ø mm | ø nomin. DN | ext. ø mm | ø inches | ø nomin. DN | ø nomin. DN | m/ct | m/ct | m/ct |
| 12 | 10 | | | | 12 | 234 | 136 | 88 |
| 14 | 10 | 13,60 | 1/4" | 8 | | 192 | 136 | 78 |
| 15/16 | | | | | 16 | 192 | 136 | 78 |
| 17/18 | 15 | 17,20 | 3/8" | 10 | | 166 | 118 | 72 |
| 19/20 | | | | | 20 | 135 | 98 | 66 |
| 22 | 20 | 21,30 | 1/2" | 15 | | 136 | 98 | 64 |
| 25 | 20 | 25,0 | | | 25 | 108 | 80 | 50 |
| 27/28 | 25 | 26,90 | 3/4" | 20 | | 98 | 78 | 48 |
| 34/35 | 32 | 33,7 | 1" | 25 | | 76 | 58 | 36 |
| 38 | | | | | | 66 | 50 | 32 |
| 42 | 40 | 42,4 | 1,1/4" | 32 | | 60 | 48 | 32 |
| 48 | | | | 40 | | 50 | 40 | 24 |
| 54 | 35 | 48,3 | 1,1/2" | 40 | | 46 | 34 | 24 |
| 57 | | | | | | 46 | 32 | 22 |
| 60 | | 60,3 | 2" | 50 | | 46 | 32 | 22 |
| 64 | | | | | | 46 | 30 | 18 |
| 70 | | 70,0 | | | | 40 | 26 | 18 |
| 76 | 65 | 76,1 | 2,1/2" | 65 | | 40 | 26 | 18 |
| 80 | | | | | | 36 | 24 | 14 |
| 90 | 80 | 88,9 | 3 | 80 | | 36 | 24 | 14 |
| 101 | | 101,6/104,3 | 3,1/2" | | | | 14 | 14 |
| 108 | | | | | | | 12 | 12 |
| 114 | 100 | 114,3 | 4" | 100 | | | 12 | 12 |

| COPPER PIPE (Cu) | | STEEL PIPE (Fe) | | | PE/PP/PVC TUBES | Thickness 25 mm | Thickness 32 mm |
|------------------|-------------|-----------------|----------|-------------|-----------------|-----------------|-----------------|
| ext. ø mm | ø nomin. DN | ext. ø mm | ø inches | ø nomin. DN | ø nomin. DN | m/ct | m/ct |
| 17/18 | 15 | 17,20 | 3/8" | 10 | | 50 | 32 |
| 22 | 20 | 21,30 | 1/2" | 15 | | 42 | 32 |
| 27/28 | 25 | 26,90 | 3/4" | 20 | | 40 | 24 |
| 34/35 | 32 | 33,7 | 1" | 25 | 25 | 24 | 22 |
| 42 | 40 | 42,4 | 1,1/4" | 32 | | 22 | 16 |
| 48 | | | | 40 | | 18 | 14 |
| 54 | 35 | 48,3 | 1,1/2" | 40 | | 16 | 12 |
| 60 | | 60,3 | 2" | 50 | | 12 | 10 |
| 64 | | | | | | 12 | 10 |
| 70 | | 70,0 | | | | 12 | 8 |
| 76 | 65 | 76,1 | 2,1/2" | 65 | | 10 | 8 |
| 80 | | | | | | | 8 |
| 90 | 80 | 88,9 | 3 | 80 | | 8 | 8 |
| 102 | | | | | | 8 | 6 |
| 108 | | | | | | 6 | 6 |
| 114 | 100 | 114,3 | 4" | 100 | | 6 | 6 |

* Product not in stock, only produced on request. Packaging dimensions: 212 x 33 x 39 cm.



COILS

| Internal ø | Thickness 6 mm | Thickness 9 mm | Thickness 13 mm |
|------------|----------------|----------------|-----------------|
| mm | m/ct | m/ct | m/ct |
| 6 | 95 | 70 | 45 |
| 10 | 75 | 50 | 35 |
| 12 | 65 | 45 | 32 |
| 15 | 55 | 40 | 32 |
| 18 | | 38 | 30 |
| 20 | | 34 | 28 |
| 22 | 40 | 30 | 26 |
| 28 | 30 | 26 | 20 |

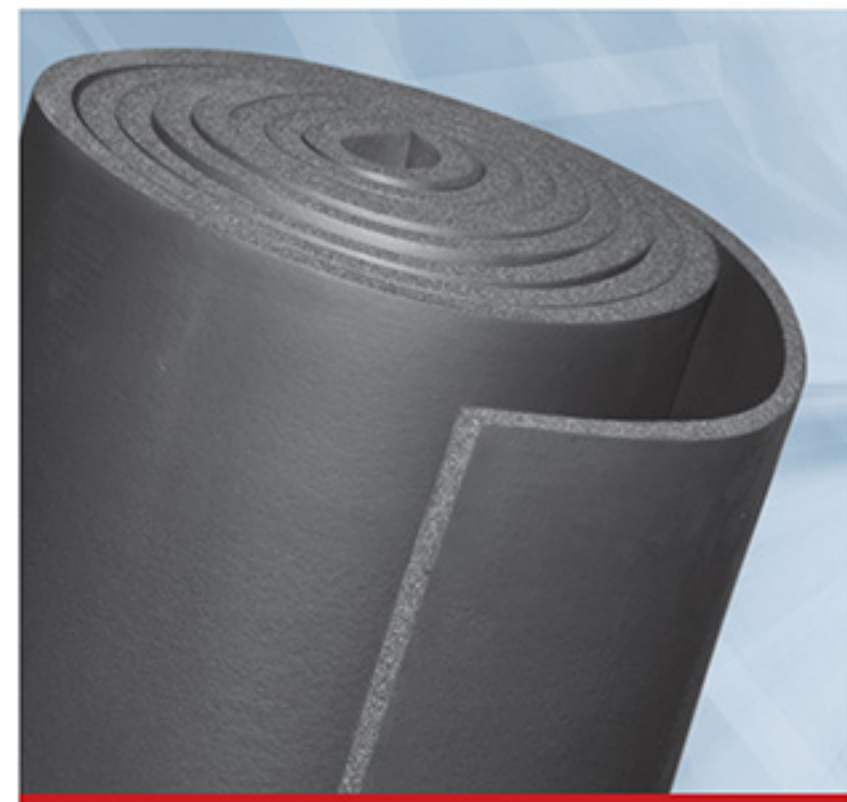
Packaging dimensions: 60 x 60 x 21 cm.



SHEETS IN ROLLS

| Code | Thickness mm | Dimensions m ² |
|---------|--------------|---------------------------|
| 06EUR R | 6 | 30 |
| 10EUR R | 10 | 20 |
| 13EUR R | 13 | 14 |
| 16EUR R | 16 | 12 |
| 19EUR R | 19 | 10 |
| 25EUR R | 25 | 8 |
| 32EUR R | 32 | 6 |
| 40EUR R | 40 | 4 |

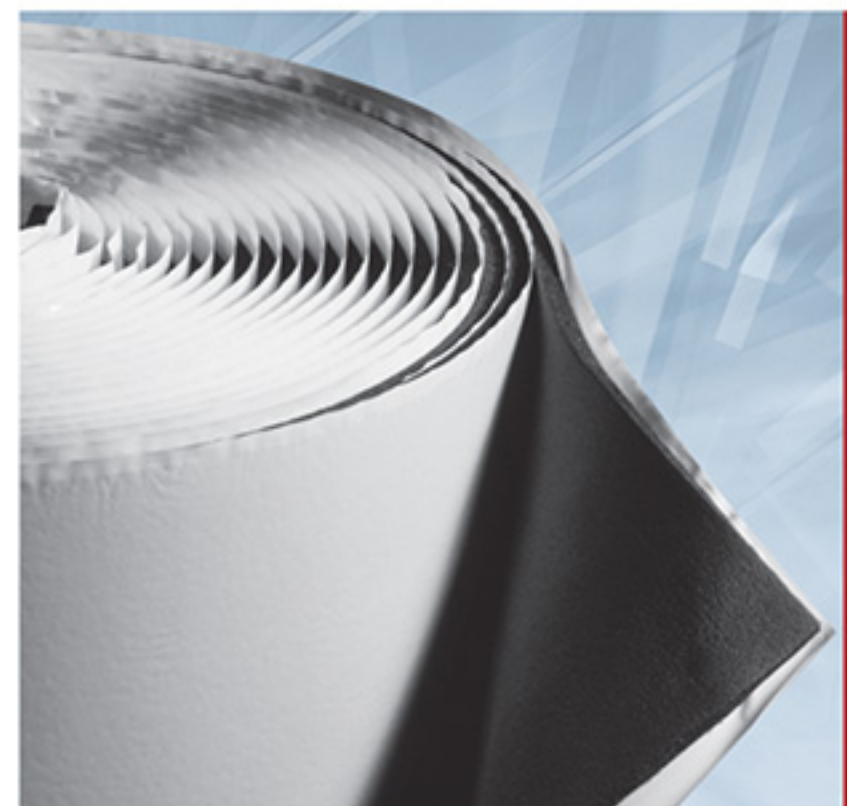
Packaging dimensions: 54 x 54 x 110 cm = (volume m³ 0,34)



SELF-ADHESIVE SHEETS IN ROLLS

| Code | Thickness mm | Dimensions m ² |
|------------|--------------|---------------------------|
| 06EUR R AD | 6 | 30 |
| 10EUR R AD | 10 | 20 |
| 13EUR R AD | 13 | 14 |
| 16EUR R AD | 16 | 12 |
| 19EUR R AD | 19 | 10 |
| 25EUR R AD | 25 | 8 |
| 32EUR R AD | 32 | 6 |
| 40EUR R AD | 40 | 4 |

Packaging dimensions: 54 x 54 x 110 cm = (volume m³ 0,34)



FLAT SHEETS: 2 x 0.5 m

| Code | Thickness mm | Dimensions m |
|---------------|--------------|--------------|
| 06EUR P 0,5x2 | 6 | 2 x 0,5 |
| 10EUR P 0,5x2 | 10 | 2 x 0,5 |
| 13EUR P 0,5x2 | 13 | 2 x 0,5 |
| 16EUR P 0,5x2 | 16 | 2 x 0,5 |
| 19EUR P 0,5x2 | 19 | 2 x 0,5 |
| 25EUR P 0,5x2 | 25 | 2 x 0,5 |
| 32EUR P 0,5x2 | 32 | 2 x 0,5 |
| 40EUR P 0,5x2 | 40 | 2 x 0,5 |

Packaging dimensions: 210 x 17 x 57 cm = (volume m³ 0,20)

SHEETS

Insulation materials. Our world. For a better world.



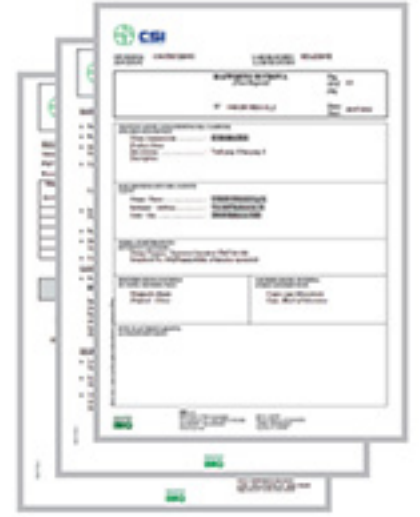
Determination of PH, Anions, Metals



Low Flame - Spread Characteristics Certification (Annex A)



USA & Canada Certificate of Compliance



Fire Reaction Test Report



Annex 7 of the Award Certificate



DNV Business Assurance Management System Certificate

CEFEP

Union Foam is member of CEFEP

CEFEP is the leading European FEF and PEF Manufacturers Group who have joined together to develop and approve a consistent set of quality control requirements. In order to provide an independent guarantee that their products will always meet the exacting physical performance requirements CEFEP have taken the lead in introducing the RAL quality mark scheme for FEF and PEF insulation products.

Führende europäische Hersteller von technischen Dämmstoffen aus Schaumkunststoffen haben sich in CEFEP, der Interessengemeinschaft des FEF/PEF, zusammengeschlossen. Diese Interessengemeinschaft vertritt die Branche in wichtigen Gremien und möchte Anwendern über das RAL Gütezeichen FEF/PEF gemeinsame Qualitätsstandards bei der Auswahl und dem Einsatz der Produkte an die Hand geben.




Member of the leading FEF and PEF Manufacturers Group



Low Flame - Spread Characteristics Certification (Annex B)



RAL Award Certificate



Determination of Anti - Microbial



Fire Classification of Construction Products



CE Certification



Well Penetration



EUROBATEX®

یوروباتکس

DIMENSIONAL TOLERANCES SPECIFIED BY EUROPEAN PRODUCT STANDARD EN 14304

| Form of delivery | Length | Width | Thickness | | Squareness | Inside diameter | |
|------------------|----------------|-----------|--------------------|----------------|-------------------------|---------------------------------------|---------------------------------------|
| | | | Declared | Tolerance | | $D_i \leq 100$ | $D_i > 100$ |
| Tubes | $\pm 1,5\%$ | - | $d_D \leq 8$ | ± 1 | 3,0 mm | $D_{iD} + 1 \leq D_i \leq D_{iD} + 4$ | $D_{iD} + 1 \leq D_i \leq D_{iD} + 6$ |
| | | | $8 < d_D \leq 18$ | $\pm 1,5$ | - | | |
| | | | $18 < d_D \leq 31$ | $\pm 2,5$ | - | | |
| | | | $d_D > 31$ | ± 3 | - | | |
| Sheets | $\pm 1,5\%$ | $\pm 2\%$ | $d_D \leq 6$ | ± 1 | 3,0 mm/m (length/width) | - | - |
| | | | $6 < d_D \leq 19$ | $\pm 1,5$ | - | | |
| | | | $d_D > 19$ | ± 2 | 3,0 mm (thickness) | | |
| Rolls | + 5% - 1.5% | $\pm 2\%$ | $d_D \leq 6$ | ± 1 | 3,0 mm/m (length/width) | - | - |
| | | | $6 < d_D \leq 19$ | $\pm 1,5$ | - | | |
| | | | $d_D > 19$ | ± 2 | 3,0 mm (thickness) | | |
| Tapes | + 5% - 1.5% | $\pm 2\%$ | $d_D = 3$ | - 0.1 + 1,5 | - | - | - |